



KYAW THAR

ENGINEERING & CONSTRUCTION GROUP CO., LTD.



COMPANY PROFILE



CONTENTS

- COMPANY DATA
- MESSAGE FROM MD
- BOARD OF DIRECTORS
- SCOPE OF CAPABILITY
- OUR VISION, MISSION AND CORE VALUES
- TOTAL ENGINEERING SOLUTION
- ORGANIZATION STRUCTURE
- CONSTRUCTION PROJECTS RECORD
- STEEL STRUCTURE FABRICATION FACTORY
- CONSTRUCTION MATERIAL TRADING
- LOGISTIC, HEAVY MACHINERY & PAINTING YARD
- OUR CLIENTS & PARTNERS
- AWARD AND CERTIFICATION
- HEALTH, SAFETY, SOCIAL & ENVIRONMENT (HSSE)
- CORPORATE SOCIAL RESPONSIBILITY (CSR)
- SELECTED PROJECT LIST

COMPANY DATA

Company Name	Kyaw Thar Engineering and Construction Group Co., Ltd.
Managing Director	U Maung Aye
Established	1992
Number of Employees	350
Certifications	ISO 9001:2015
Company Grade by M.Eng.C	Grade A
Head Office	No.(D3), Bo Myat Tun Housing, Corner of 49 th Street & Mahar Bandoola Road, Pazundaung, Yangon.
Mandalay Branch Office	No.(A7), Corner of 53 & 28 Street , Chan Aye Thar Zan, Mandalay
Factory	No. 81, Mya Taung Won Gyi U Mo Street, Dagon Seikkan Industrial Zone, Yangon.
Logistic Base	No. 92, 93, 94, Makhayar Min Thar Gyi Road, Thilawa Local Industrial Zone, Kyauk Tan, Yangon.
Website	www.kyawtharengg.com.mm

BUSINESS AREA

1. Construction
2. Steel Structure Factory
3. Construction Material Trading
4. Logistic, Heavy Machinery & Painting Yard

MESSAGE FROM MD



U Maung Aye
Managing Director

At KTECG, we firmly believe that strong foundations are essential for lasting success. Since our founding company established, our core commitment has been to deliver engineering and construction solutions defined by quality, integrity, and innovation. Each project we undertake is a testament to our dedication to building vital infrastructure that contributes to Myanmar's growth and creates long-term value for our clients and the communities we serve.

As we continuously expand our capabilities and integrate the latest technologies, our central focus remains unwavering: to maintain global standards, guarantee safety in every operation, and consistently provide efficient, reliable, and cost-effective services. These principles, powered by the collective expertise of our people, are what drive our sustained progress.

I extend my deepest appreciation to our clients, partners, and team members for their invaluable trust and support. Your confidence/trust in KTECG motivates/inspires us to pursue our goals with even greater determination/zeal. Working together, we will continue to elevate the benchmarks in our industry and build a future that is stronger, smarter, and truly sustainable.

So, you are warmly welcome

to explore Kyaw Thar Engineering and Construction Group Co., Ltd.'s
head office anytime and let's discuss our business
milestone, quality, innovation, and the trust together to build.

BOARD OF DIRECTORS



- **U MAUNG AYE**
MANAGING DIRECTOR



- **U HLA SHWE**
EXECUTIVE DIRECTOR
(PROJECT)



- **U MOE THU**
EXECUTIVE DIRECTOR
(PLANNING)



- **U ZAW OO**
EXECUTIVE DIRECTOR
(CONSTRUCTION)



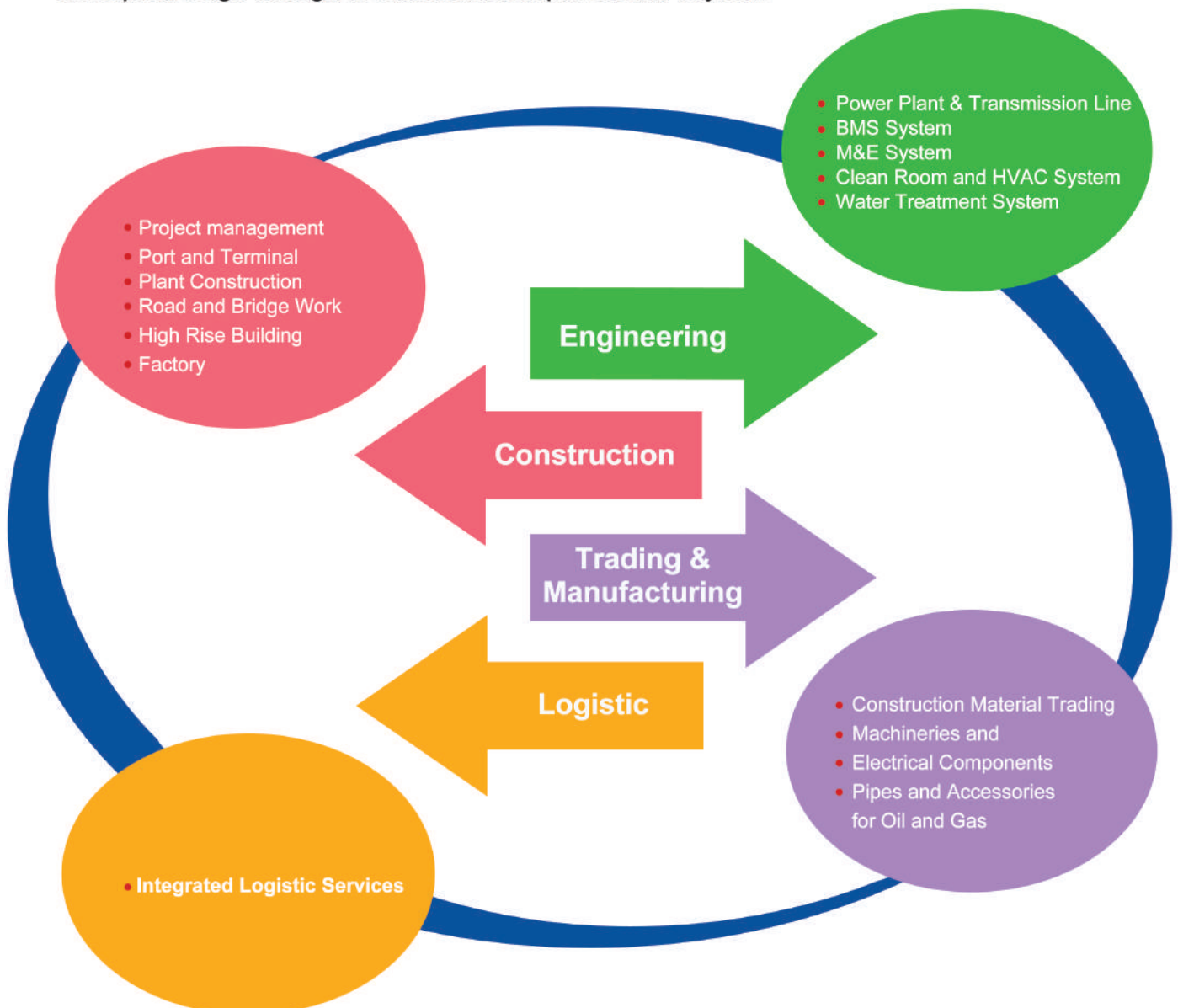
- **DAW AYE YU YUTHAW**
EXECUTIVE DIRECTOR
(FINANCE)

SCOPE OF CAPABILITY

OUR CAPABILITIES

Driven by versatility, we excel in delivering a diverse spectrum of world-class construction and engineering services tailored to modern industrial needs.

Our holistic approach ensures that every project is meticulously managed from its earliest conceptual stage through to successful completion and beyond.



OUR VISION

OUR MISSION

CORE VALUES



OUR VISION

- To be a leading professionalism, dynamism and trusted engineering and construction partner in Myanmar.

OUR MISSION

- To build the future of Myanmar by delivering modern, safe, and high-quality construction projects that exceed client expectations and create lasting value for our communities.

CORE VALUES

- To deliver a culture of absolute accountability and dedicated teamwork, rigorous professional ethic and unwavering integrity

SAFETY & ENVIRONMENT

KTECG commit to a 'Safety Always' culture where advanced technology protects our workforce and sustainable innovation preserves our planet. By integrating ISO-aligned protocols and circular building methods, we ensure a zero-harm environment and a net-positive environmental impact on every site.



TOTAL ENGINEERING SOLUTION

**TOTAL
ENGINEERING
CREATES
SUCCESSFUL
PROJECTS**

Engineering

Procurement

Construction
Field Service



Planning
Feasibility
Study

Basic Design
Detailed Design

Procurement

Construction

Testing and
Commissioning

Maintenance
and service

ORGANIZATION STRUCTURE

KTECG Organizational Structure is based on 3 unique features:

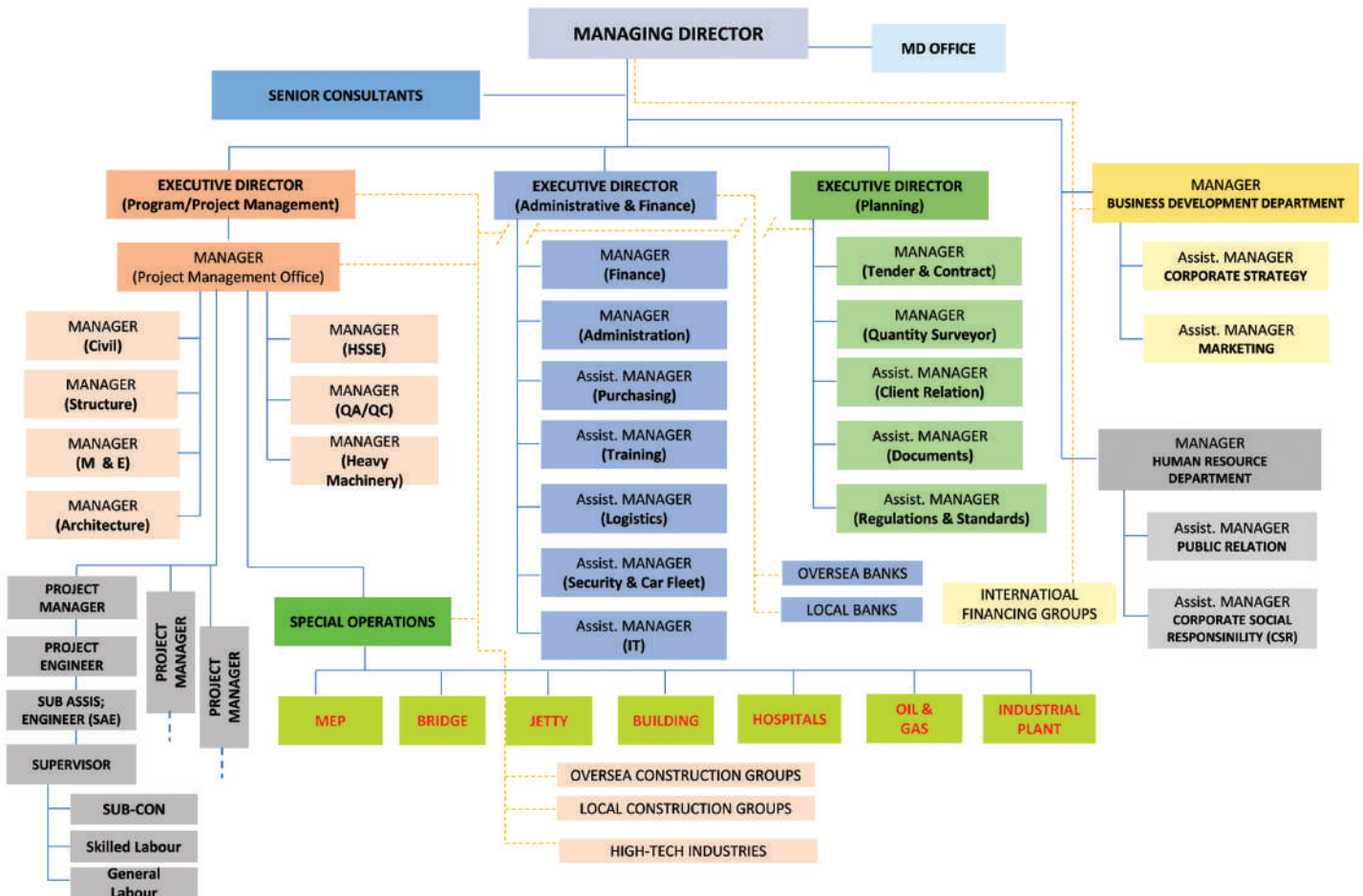
- a. Historical development of the company
- b. Practical development based on the reality of changing economic landscape
- c. Modern Corporate Structure.

KTECG has evolved over decades with firm and efficient leadership and grows.

KTECG's organizational structure is adapted to the changing economic landscape of Myanmar and regional and global development in construction industry. Adoption of Quality Management System and Project Management Principles, apart from others, are crucial to success road ahead.

There is a mixture of experiences and young talents in every business area of the company. Vast and insight experience come from a group of senior consultants affiliated to BOD and respective operational areas such as electricity, oil and gas, railway, road, bridge and pharmaceutical factory, etc.

International relations and modern ways of financing are also key areas KTECG is focusing.



CONSTRUCTION



PHARMACEUTICAL FACTORY, GMP STORAGE BUILDING & HOSPITAL

Kyaw Thar Engineering and Construction Group (KTECG) have built a number of pharmaceutical plants and related facilities. Key plants include: Snake Anti-Venom Production Facility (for BPI, Insein), Automated Pharmaceutical Warehouse with AS/RS machines (for BPI, Insein) and Large Volume Parenteral (LVP) Production Plant for Pharmaceutical Factory, Inyaung and Pyin Oo Lwin and a number of other facilities.

KTECG successfully took challenges for construction of these types of highly complex building systems from the concept, design, build, installation to handing over to the end-user in the early operational phase.

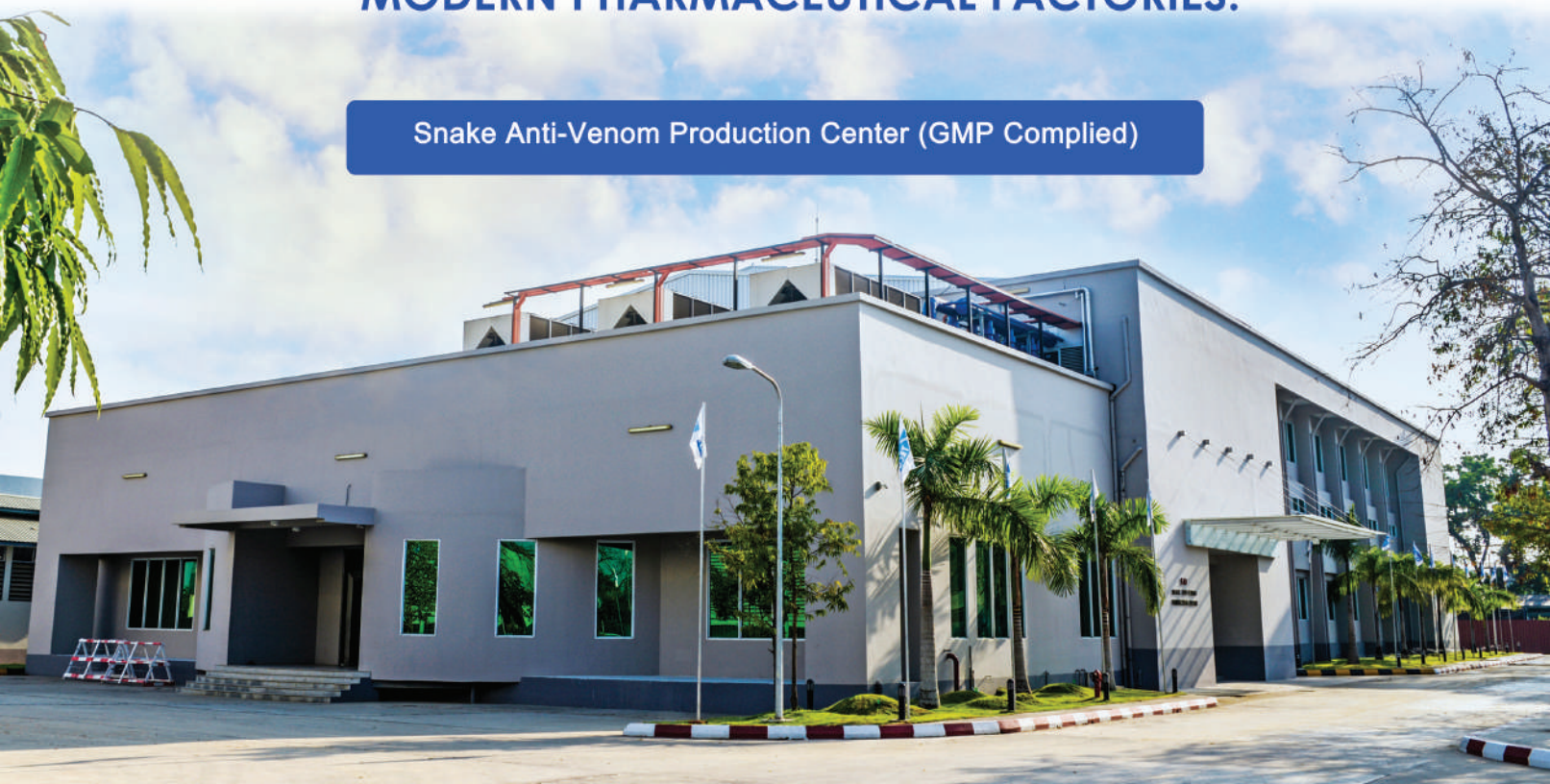
We have adopted an innovative, time-tested concept of a total project management approach which includes integration of Good Manufacturing Practice (GMP), pharmaceutical engineering concepts, modern engineering concepts, regulatory considerations and end-user's requirements. That concept is made feasible and successful by integration of GMP principles, ISPE principles and ISO guidelines. A number of major pharmaceutical factories in Myanmar were built by KTECG as turn-key solutions.

We have a team of qualified scientists and engineers who have sufficient experience in building pharmaceutical production and related facilities. KTECG welcome clients who are interested in building of new pharmaceutical factories and pharmaceutical related facilities as we could offer from the start to end project turn-key solution from the concept, design, built, install and commissioning, including GMP compliance solution and provision of training.

Our vast experiences in pharmaceutical facilities had led us to position for another type of highly complex building of hospitals and healthcare facilities.

TOWARDS A NATION WITH BETTER, HIGH-QUALITY, MODERN PHARMACEUTICAL FACTORIES.

Snake Anti-Venom Production Center (GMP Complied)



Pharmaceutical Factory, GMP Storage Building & Hospital



New BPI Plant



Large Volume Parenteral Solution Plant (LVPs)



Myanma Pharmaceutical Factory (Inyang)



Myanma Pharmaceutical Factory (Pyin Oo Lwin)



Automated Warehouse for Pharmaceutical Factory



New BPI Project

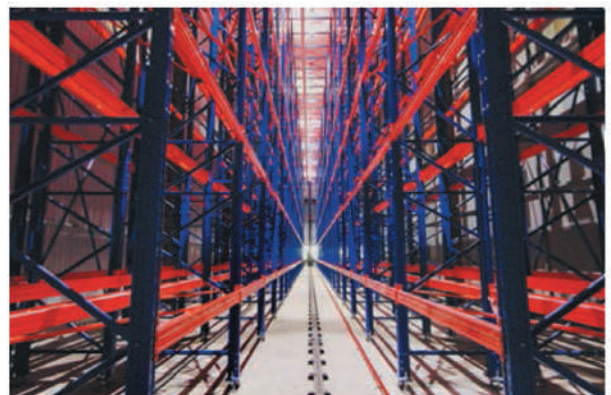


Snake Anti-Venom Production Center (GMP Complied)



Snake Farm

Pharmaceutical Factory, GMP Storage Building & Hospital

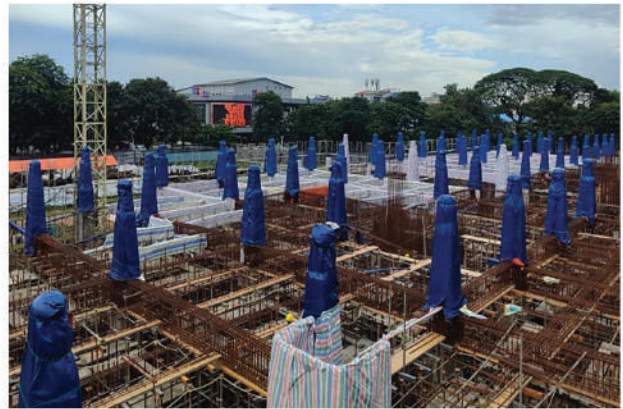


New Yangon Specialist Hospital Project (Taisei Corporation, Japan)

The New Yangon Specialist Hospital (JICA) Project, located in Yangon, is a comprehensive development project for the Taisei Corporation (Japan).

This seven-storey reinforced concrete (RC) structure features a pile foundation and in extent, a total floor area of 350,000 sq-ft with a building height of 120 ft. Managed by a distinguished consulting consortium including Yamashita Sekkei Inc., Azusa Sekkei Co., Ltd., and Binko International.

The project was scheduled for a 14-months duration from July 2024 to September 2025. The construction involves approximately 16,000 cubic meters of concrete and 3,100 tons of rebar.



New Yangon Specialist Hospital Project (Taisei Corporation, Japan)



HARBOR JETTY, OFFSHORE FACILITY

Growth in Myanmar trade demands better efficiency and the highest capacity of ports, marine and industrial structures in Yangon and Coastal Regions.

KTECG understands that port development should focus on the ability to operate cost efficiently, safely, and reliably. Ports also need to operate sustainably in a community, and align with the government and regional development policies and programs.

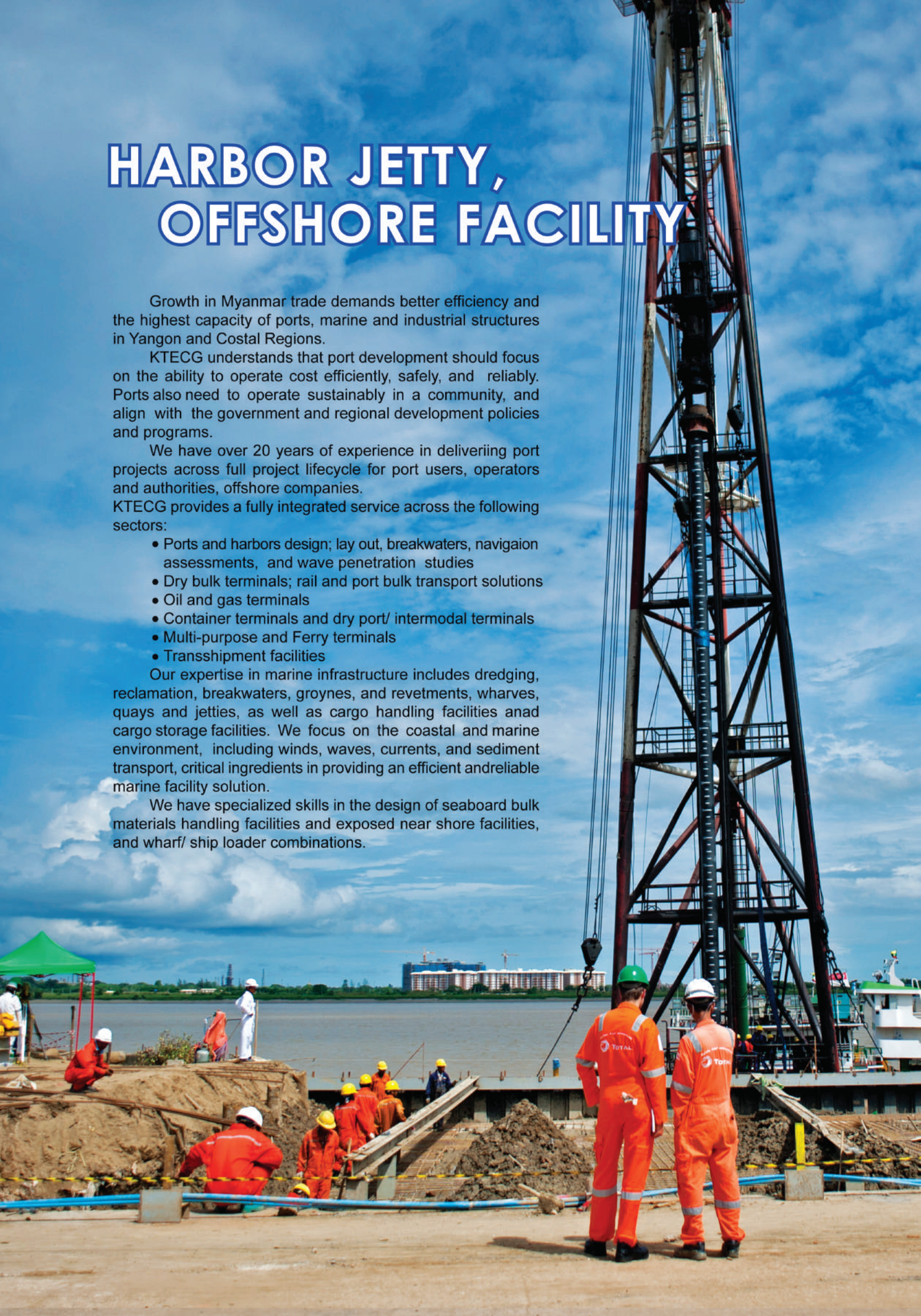
We have over 20 years of experience in delivering port projects across full project lifecycle for port users, operators and authorities, offshore companies.

KTECG provides a fully integrated service across the following sectors:

- Ports and harbors design; lay out, breakwaters, navigation assessments, and wave penetration studies
- Dry bulk terminals; rail and port bulk transport solutions
- Oil and gas terminals
- Container terminals and dry port/ intermodal terminals
- Multi-purpose and Ferry terminals
- Transshipment facilities

Our expertise in marine infrastructure includes dredging, reclamation, breakwaters, groynes, and revetments, wharves, quays and jetties, as well as cargo handling facilities and cargo storage facilities. We focus on the coastal and marine environment, including winds, waves, currents, and sediment transport, critical ingredients in providing an efficient and reliable marine facility solution.

We have specialized skills in the design of seaboard bulk materials handling facilities and exposed near shore facilities, and wharf/ ship loader combinations.



Thaketa Ferry Terminal & Floating Jetty Project (Total E&P Myanmar)



Thaketa Ferry Terminal Project (Yangon)



Pavement Construction



Pile Guide Installation



Group Photo of KTECG & Total E&P Myanmar



Pile Splicing



Pile Driving by Piling Barge



IRCP Jetty Project

PORT & TERMINAL DEVELOPMENT (SEZ)

KTECG constructed several port facilities such as Petroleum Terminal Construction, Grain Terminal Construction, Oil Storage Tank and Pipe Line Construction in Thilawa SEZ that covers about 3,000 hector located at Thanlynn Township, Myanmar

KTECG is providing its engineering and construction services to the Petrochemical, Oil and Gas Industry, in Myanmar. The focus of its construction service is Mechanical Works including shop fabrication and assembly of tanks and pipe racks, Civil Work, Pile foundation, Tank foundation, Steel facility Structure, Infrastructure, Offices buildings, etc.

KTECG is an indigenous multi-discipline oil & gas field construction under international standards while continuously raising the benchmark of customer satisfaction.

The key to our success is the combination of oversea experienced engineers with predominant local execution staff.

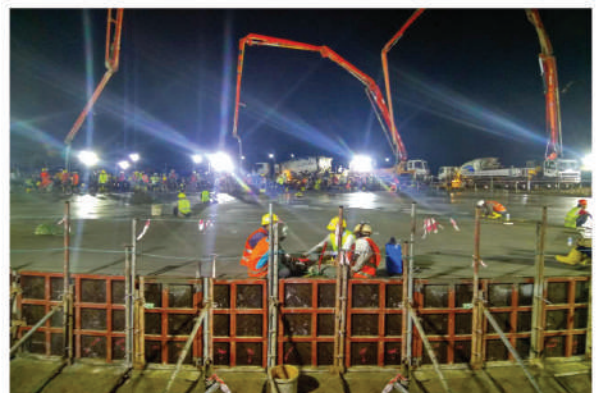


Padauk Shwe War Terminal Project (Rotary, Singapore)

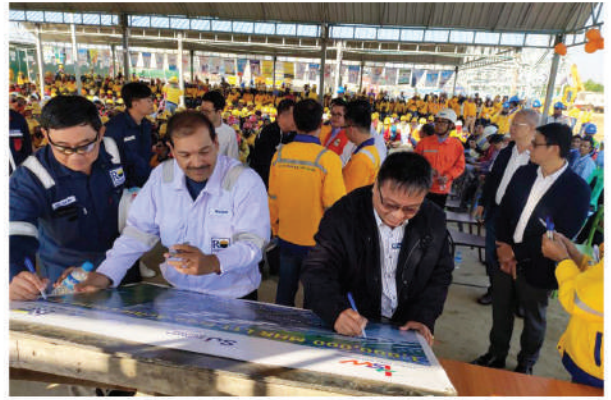
PSW Terminal Project, located at Plot-33, Thilawa Port Area, was an inclusive 20-months undertaking for Rotary Engineering Co., Ltd. that crossed from January, 2019, to September, 2020.

The extensive scope of work included piling, civil, and structural works, alongside the construction of roads, pavement, and fencing. Specialized services featured tank foundation work, steel fabrication, and the painting and erection of pipe structures.

Demonstrating the significant scale of the project, construction volumes included 26,000 Cu-M of concrete casting 31,000 Cu-M of excavation, 1,100 tons of steel structure work, and 43,000 meters length of piling.



Padauk Shwe War Terminal Project (Rotary, Singapore)



Padauk Shwe War Terminal Project (Rotary, Singapore)



Grain Terminal Project (Thilawa)



Thilawa Oil Storage Tank Terminal Project



INDUSTRIAL PLANT & FACTORY

As a premier leader in industrial construction, KTECG specializes in delivering high-performance factories and mills tailored to diverse industrial needs.

KTECG sets the benchmark in industrial engineering, provision of comprehensive design-and-build solutions for specialized manufacturing plants nationwide.

With a proven track record of successful projects across the nation, we integrate engineering excellence with innovative solutions to drive industrial growth.



J&M Steel Fabrication Factory



60 Ton/Day Pulp Factory (Thapaung)



Cement Factory (Taung Philar)



Cement Factory (Taung Philar)

Cement Factory (Taung Philar)



Industrial Plant & Factory



Glass Factory (Kyauk Se)



I&H Engineering
Precast Concrete Factory (Hmaw-Bi)



I&H Engineering
Precast Concrete Factory (Hmaw-Bi)



Concreting Work (Water Tank)



Pulp Factory (ThaPaung)



Pulp Factory (Ye Ni)



Pulp Factory (Ye Ni)

ROAD & BRIDGE

Road structure

KTECG constructed rural & highway road structures according to design & profile such as embankment work, sub-grade, sub-base and wearing course under required field tests with proper drainage.

Bridge structure

KTECG constructed various types of bridge, and consist of bridge structure sequence such as bored piling, excavation, abutment & pier structure, steel plate girder/ steel box girder/ Prestressed Concrete RCC girder/ Decking of bridge. During construction, KTECG used heavy equipment such as drilling rig, lifting crane, excavator, barge, concrete plant, concrete pump & truck. Launching girder etc.

“DRIVE SAFELY WITH SAFE DESIGN AND IMPLEMENTATION MANNER”

Bago River Bridge No. 3 (Yangon ~ Thanlyin)



Bago River Bridge Construction Project (Yokogawa Bridge Corporation, Japan)



Road & Bridge



La Maing Bridge Project



Road & Bridge



Bridge No. 72(A) Project



Mann Shwe Set Taw Pagoda Lift Tower & Sky Walkway Bridge Project



PUBLIC & COMMERCIAL BUILDINGS

The Magway Region Parliament Building Project, located in Magway Region, was a comprehensive 22-months construction project completed for the Magway Region Hluttaw between September 2017 and July 2019.

The facility features a three-story reinforced concrete (RCC) structure with a gross floor area of 112,892 sq-ft (10,487 sq-m). The broad scope of work encompassed civil, structural, and steel structure elements, alongside high-end interior design and finishing.

Technical installations included a complete HV and LV electrical network, an ACMV system utilizing VRV technology, including ducting & piping works and integrated mechanical, plumbing, and sanitary systems. Furthermore, the project involved the installation of fire-fighting systems, elevators, and ELV systems, as well as the development of surrounding infrastructure with roads, pavements, and landscaping.

Parliament Building (Magway)



Magway Regional Hluttaw Building Project



Electrical And Extra Low Voltage (ELV) System



Public Address & Conference Voice Control System



BMS System



Building Monitoring Station



Fire Alarm and Intercom



Conference Intercom

Public & Commercial Buildings



Aerospace Engineering University (Meikhtila)



Technological Research Centre (Yangon)



Government Technical Institute (Bago)



Convocation Hall (Magway)



Computer University (Taungoo)



Computer University (Meikhtila)



Shop House (Thilawa SEZ, Yangon)



Technological University (Meikhtila)

ELECTRICAL & POWER PLANT

KTECG is the forerunner in the field of electrical and power plant construction industry.

KTECG holds long-standing, in-depth expertise in high-value & complexity of electrical and power plant construction. Through decades of operational experience, we consistently ensure superior quality execution and reliable, on-time project delivery.



Water Treatment & Waste Water Treatment



66 kV Transmission Line
(MyinGyan-Nabuai)



225 MW Combine Cycle
Power Plant Project



Max Oil Depot



Max Oil Depot



Max Oil Depot



Max Oil Depot



66/11 kV, 10 MVA Substation



11 kV Distribution Line

MEP WORKS

Mechanical And Electrical System

- Today's building are increasing and Complex. In order to achieve the right Mechanical and Electrical System are required in buildings.
- KTECG is well experienced in providing Mechanical and Electrical System required for respective of buildings such as Commercial, Industrial, Residential, Pharmaceutical Factory and Infrastructure Projects.
- A single point Turnkey Engineering Solution with total control from start to finish under one roof. Ensuring highest performance in quality & cost for Infrastructure Development and Building Services Engineering.
- We do provide our clients with innovative engineering solutions by leveraging on our strengths such as our expertise in high specification stainable and innovative methods, strong track record, established reputation and dynamic management team.
- We are providing sufficient resources and equipment to ensure that to achieve consistent quality and services.



Ducting and Piping



Ducting and Piping



Mechanical Ventilation



Smoke Extraction

Air-Conditioning and Mechanical Ventilation System

KTECG is well experienced in providing correct HVAC required for respective type of buildings such as pharmaceutical factory clean zones, good indoor air quality for large buildings, etc., in order to achieve the right indoor air quality, heating, ventilation, and air-conditioning (HVAC) system are required.

We have established the first advanced HVAC system for Myanmar pharmaceutical industry including a large capacity, multi-functional building management system (BMS). That was made possible by our well experienced and reputed international and local team of HVAC engineers and scientist.



Water Cooled Chiller



Pumping



Cooling Tower



Ducted Fan Coil Unit



Air Cooled Chiller



Air Handling Unit

Electrical And Extra Low Voltage (ELV) System

KTECG has many kinds of experience in providing Electrical and Extra Low Voltage System (ELV) in building. As an integrated M&E service provider, we understand the full spectrum of work that is involved in each and every stage of a construction project, starting from the beginning stage of designing, installation and right up to the testing and commissioning.

We do focus on quality and building compliance in an industry and we expanded our capabilities to provide more comprehensive experience to our clients as follows;

- Lighting, Power and Electrical Distribution System for Residential, Commercial and Industrial Installation.
- Lighting Protection System and Earthing system.
- High Voltage Switchgear & Transformer Installation
- Street Lighting and Compound Lighting
- Low Voltage Electrical Works
- Extra Low Voltage System (ELV) such as Fire Alarm, CCTV, Public Announcement, Security and Surveillance System, BMS System.



Electrical Main Distribution Boards



Electrical Trunking



Lighting System



Lighting System

Fire Protection System

Fire safety and protection forms one of our core business and we are proud of the comprehensive services that we readily offer to our clients, We specialize in number of systems, including;

- Automatic Fire Alarm System
- Hose Reel System
- Dry and Wet Riser System
- Hydrant System
- Fire Extinguisher System
- Foam Suppression System
- Gas Suppression and Extinguishing System



Fire Pumps



Sprinkler Control Valves



Fire Fighting Equipment



Gas Suppression System

STEEL STRUCTURE FABRICATION FACTORY



STEEL STRUCTURE FABRICATION FACTORY

KTSE's steel structure factory is a specialized facility that transforms raw steel materials into finished structural components for construction projects, such as factories, warehouses, high-rise buildings, refinery storage tanks, agricultural grain silos and bridges.

The tasks consist of from the initial design and material procurement to precision fabrication, surface treatment, and preparation for on-site erection.

- (A) Engineering, Design and Detailing consist of:**
 - Shop drawing generation
 - BIM modeling
 - Structural optimization
- (B) Material Procurement and Inspection**
 - Sourcing Raw Materials
 - Quality Verification
- (C) Fabrication and Manufacturing**
 - Cutting and Shaping
 - Bending and Forming
 - Drilling and Punching
 - Welding and Assembly
 - Pre-assembly if needed
- (D) Quality Control and Inspection (QC)**
 - Dimensional Inspection
 - Non-Destructive Testing (NDT)
 - Traceability Management
- (E) Surface Treatment and Protection**
 - Surface Cleaning
 - Coating and Painting
 - Galvanizing
- (F) Logistic and Support**
 - Packaging and Loading
 - Coordination with Contractors
- (G) On-Site Erection**
 - Survey setting out
 - Safe lifting operation
 - Comply project tolerance
 - Plumb, Align and Tightening
 - Final Touches
 - Temporary bracing
 - Personal safety





KYAW THAR STEEL ENGINEERING CO., LTD.



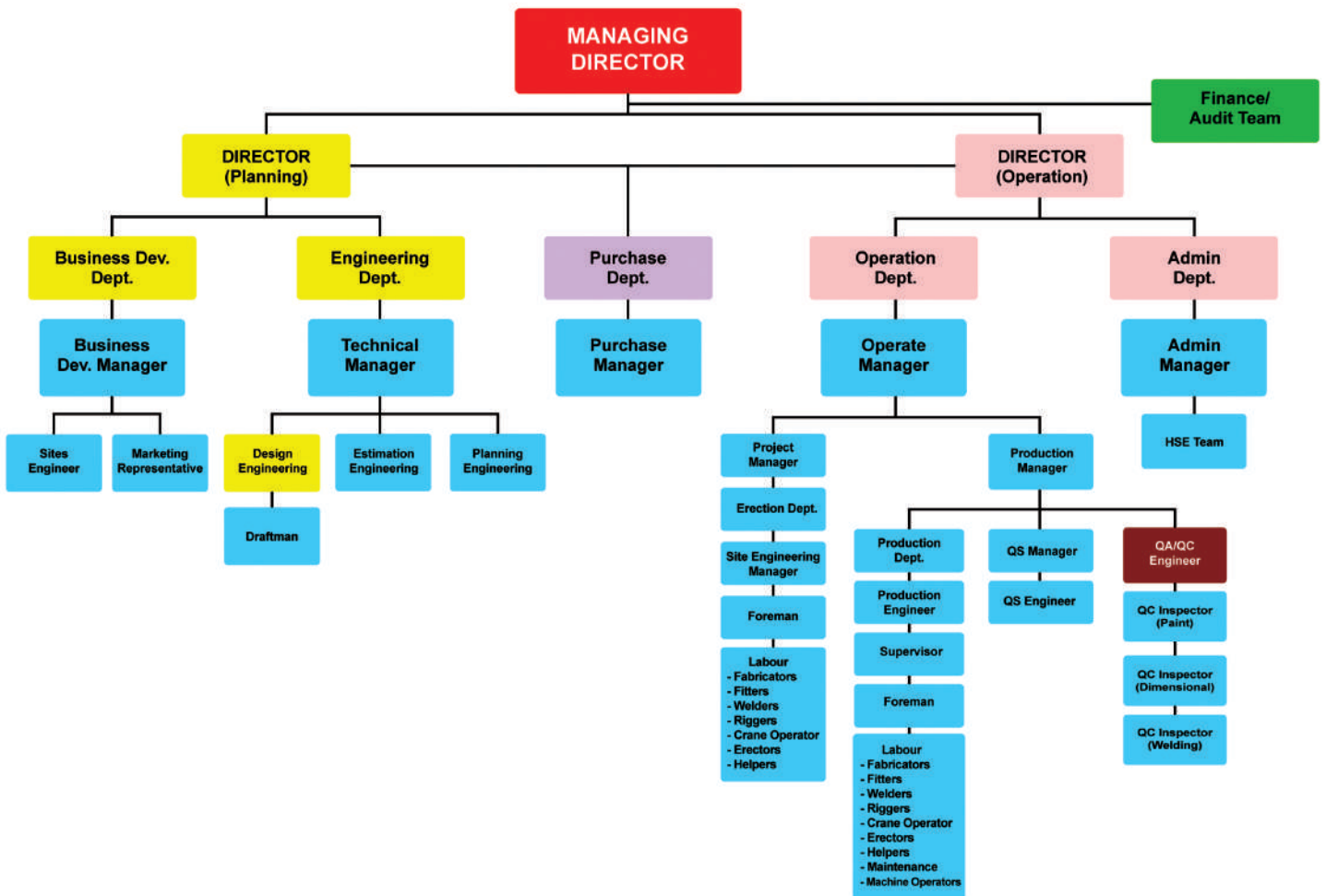
U Maung Aye
Managing Director



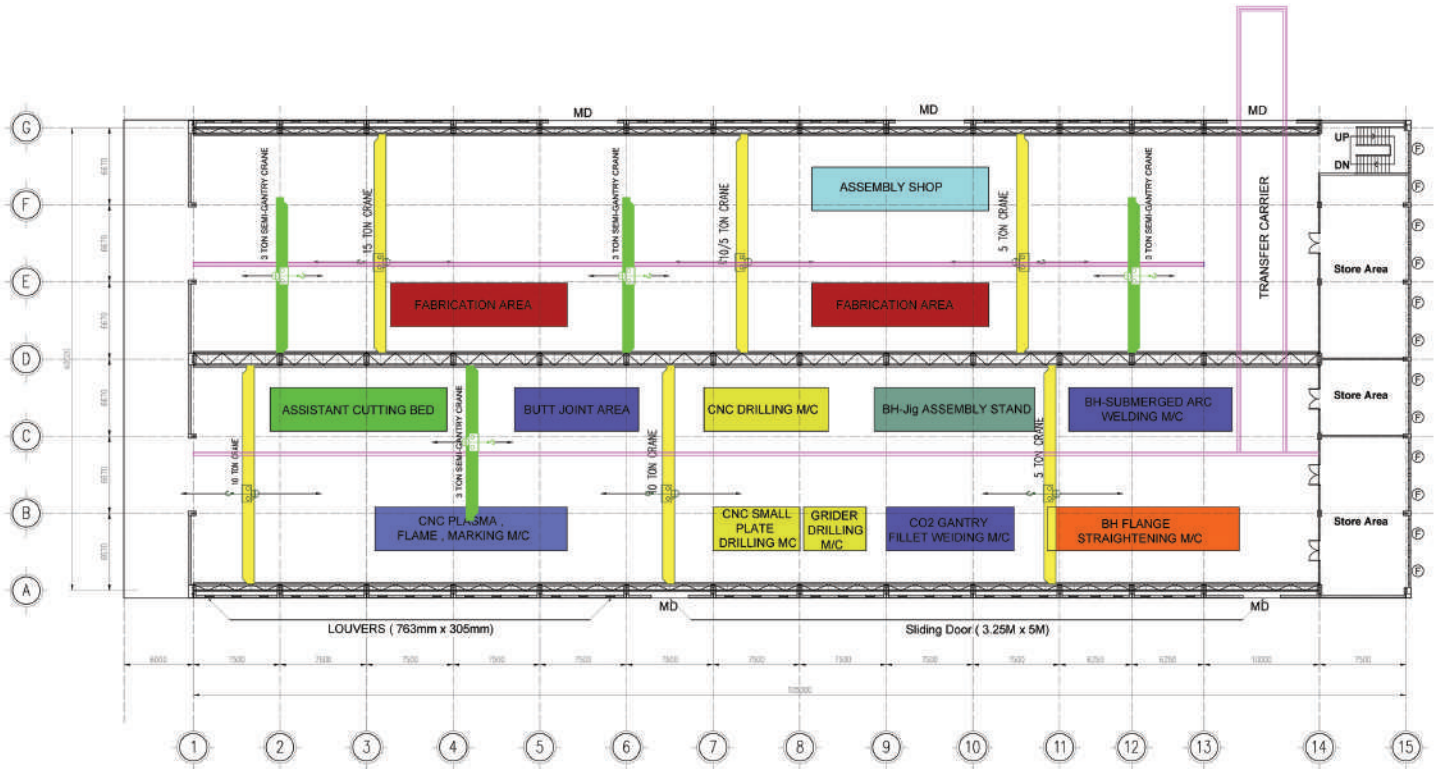
U San Htun
Director (Planning)



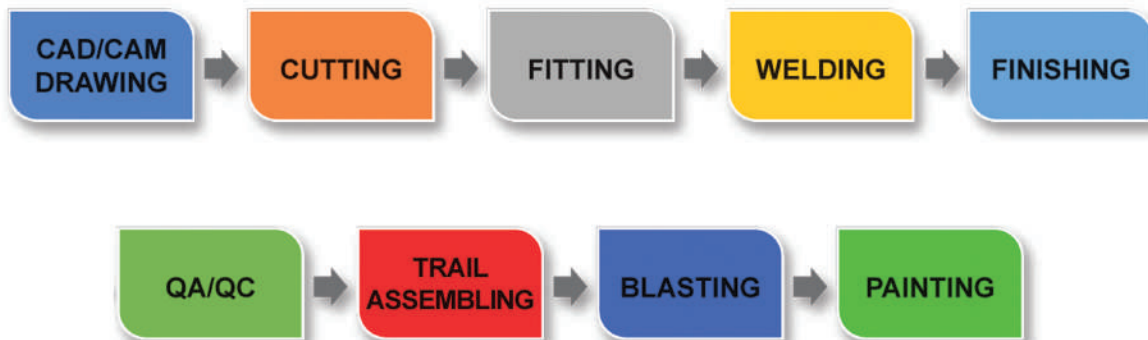
U Tin Aye
Director (Production)



STEEL STRUCTURE FABRICATION FACTORY



WORK FLOW



STEEL STRUCTURE FABRICATION FACTORY



STEEL STRUCTURE FABRICATION FACTORY



STEEL STRUCTURE FABRICATION FACTORY



Site Visit by MEng.c for Company Grade



Site Visit by MEng.c for Company Grade



WMS Project



Hyper Market (Sinmalite)



Pipe Bridge, PSW Terminal Project



Truck Loading Bay (TLB),
PSW Terminal Project



Foam Monitor Tower,
PSW Terminal Project

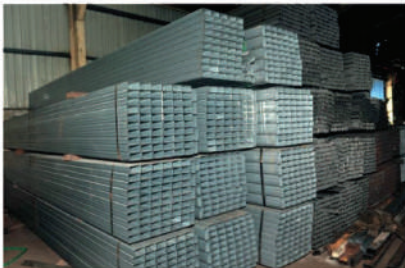
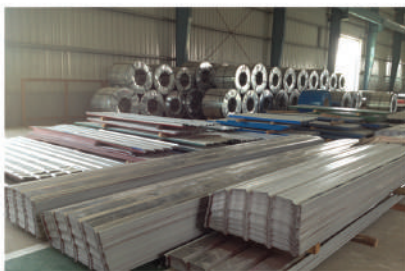
STEEL STRUCTURE FABRICATION FACTORY



Hull Shop Building Project (Thanlyin, Yangon)



CONSTRUCTION MATERIALS TRADING



CONSTRUCTION MATERIALS TRADING

TRADING ITEMS

Steel Sections

- Deformed Steel Bars
- Wire Rods
- H Beam/ I Beam
- Angle Steel Bar
- Channel Bar

Steel Pipes

- Square Hollow Sections (SHS)
- Rectangular Hollow Sections (RHS)

Steel Plates

GI Coils

PPGI / PPGL Galvanized Steel Coils

Value Added Materials

- C Channel
- Roofing Sheets
- Flex-Lock & Seam Roofing
- Transparent Sheets
- Fiber Glass Reinforced Plastic
- Wire Mesh
- Glass Wool
- Air Ventilator
- Decking Sheets
- Steel & Fiber Water Tank



TRADING



Mingalardon Branch



Mingalardon Branch



Pearl Myo Thit Branch



Sawbwar Gyi Gone Branch, Yangon



Minbu Branch No. 2



Minbu Branch No. 1

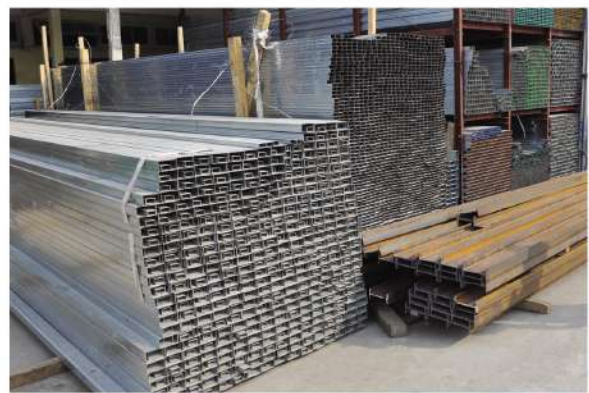


Colour Line Forming Machine



Roll Forming GI machine

TRADING



LOGISTIC, HEAVY MACHINERY & PAINTING YARD



LOGISTIC BASE, TRIAL ASSEMBLY

There are three major activities - Logistic, Trial assembly and painting yard in our compound located in the Thilawa industrial zone.

KTECG logistics plans, implements, and controls the movement and storage of goods, services, or information within a supply chain and between the points of origin and consumption. A proper supply chain may include transportation, shipping, receiving, storage, and management of all or one of these functions.

Trial Assembly, KTECG set-up the proper space for the Steel Structure trial assembly work of the fabricated steel structures. It is essential for the steel products before delivery to the site. KTECG makes sure that all parts shall be fitted once combination of all pieces.



LOGISTIC BASE, TRIAL ASSEMBLY & PAINTING YARD



OUR CLIENTS & PARTNERS



ISO 9001 : 2015

Certificate TH14/7986.02

Kyaw Thar Engineering & Construction Group Company Limited

Steel Factory No.808(1/A), Mya Taung Wun Gyi U Hmo Street, Dagon Seikkan Industrial Zone, Dagon Seikkan Township, Yangon Region, Myanmar




Has been assessed under the management system of the certified organisation defined in the main certificate TH14/7986.00 as meeting the requirements of **ISO 9001:2015**

For the following activities
Production and Fabrication of Steel Structure and Steel Member

This certificate is valid from 03 November 2023 until 19 August 2026 and remains valid subject to satisfactory surveillance audits.
Issue 2.
The validity of this certificate depends on the validity of the main certificate.

Jonathan Hill

Authorised by
Jonathan Hill
Global Head - Certification Services
SGS United Kingdom Ltd
Rosemore Business Park, Elmstone Park, Cheshire, CH65 3EN, UK
t +44 (0)151 350-6000 - www.sgs.com



This document is an authentic electronic certificate for Client business purposes use only. Printed version of the electronic certificate are permitted and will be considered as a copy. This document is issued by the Company subject to SGS General Conditions of certification services available on Terms and Conditions (TC2). Attention is drawn to the liability, indemnification and jurisdictional clauses contained therein. This document is copyright protected and any unauthorized alteration, forgery or falsification of the content or appearance of this document is voided.

Page 1 / 1

Certificate TH14/7986.01

Kyaw Thar Engineering & Construction Group Company Limited

Head Office: Bo Myat Tun Housing, Corner of 49th Street & Mahlar Bandoola Road, No 2/16/222, Room (D3), Ward (1), Pazundaung Township, Yangon Region, Myanmar




Has been assessed under the management system of the certified organisation defined in the main certificate TH14/7986.00 as meeting the requirements of **ISO 9001:2015**

For the following activities
Construction of High-Rise Building, Low-Rise Building, Harbour Jetty and Industrial Building

This certificate is valid from 03 November 2023 until 19 August 2026 and remains valid subject to satisfactory surveillance audits.
Issue 2.
The validity of this certificate depends on the validity of the main certificate.

Jonathan Hill

Authorised by
Jonathan Hill
Global Head - Certification Services
SGS United Kingdom Ltd
Rosemore Business Park, Elmstone Park, Cheshire, CH65 3EN, UK
t +44 (0)151 350-6000 - www.sgs.com



This document is an authentic electronic certificate for Client business purposes use only. Printed version of the electronic certificate are permitted and will be considered as a copy. This document is issued by the Company subject to SGS General Conditions of certification services available on Terms and Conditions (TC2). Attention is drawn to the liability, indemnification and jurisdictional clauses contained therein. This document is copyright protected and any unauthorized alteration, forgery or falsification of the content or appearance of this document is voided.

Page 1 / 1

GRADE (A) of Myanmar Engineering Council



THE REPUBLIC OF THE UNION OF MYANMAR
MYANMAR ENGINEERING COUNCIL
REGISTRATION FOR RECOGNITION OF
ENGINEERING COMPANIES AND ORGANIZATIONS

THIS IS TO CERTIFY THAT PURSUANT
FOR REGISTRATION ACCORDING TO MYANMAR ENGINEERING COUNCIL LAW 2013

**Kyaw Thar Engineering and
Construction Group Company Limited**

IS DULY RECOGNIZED AS THE
Engineering Company,
GRADE (A)
VALID UNTIL 30th MARCH 2026

IN THE REPUBLIC OF THE UNION OF MYANMAR AND IS ENTITLED TO ALL THE
RIGHTS AND PRIVILEGES CONFERRED IN SAID LAW.

Certificate No. : 0014

Date of Issue : 31-3-2025


REGISTRAR


PRESIDENT

Engr. Prof. Dr. Aung Kyaw Myat

*This Certificate is the property of the Myanmar Engineering Council and is returnable on request.
It is valid only for so long as the holder remains on the Myanmar Engineering Council's Register.*

HEALTH, SAFETY, SOCIAL & ENVIRONMENT (HSSE)

KTECG has a high standard for safety in accordance with international norms.

- KTECG is committed to do its best to protect the Stakeholder from any workplace accident.
- Sharing is caring. Experience sharing by Safety Officer is part of daily activities.
- Use of safe work method and best attainable technology makes our workplace safe.



Rotary Engineering Group



Total E&P Myanmar



Penta Ocean Construction



PTTEP International

CORPORATE SOCIAL RESPONSIBILITY (CSR)

Philosophy

KTECG is a socially accountable company - to itself, its stakeholders, and the public.

KTECG is a company that gives back to the community.

Trough CSR programs, philanthropy, and volunteer efforts, our businesses can benefit needy society. Our CSR programs are 100 percent funded by the company.



Supporting for Myanmar Engineering Council 10 Years Anniversary & World's Engineer Day Ceremony



Free Eyes Operation



Donation at Flooding Area



Free Eyes Operation



Free Eyes Operation



Donation at Orphanage



Water Donation



**SELECTED
PROJECT LIST**



SELECTED PROJECT LIST

Project for Oil & Gas Sector

- Thaketa Ferry Terminal Project, (Total E&P Myanmar - French)
- Thaketa MOGE Supply Base Upgrading Project (PTTEP International Ltd. - Thailand)
- Installation & Construction of Foundation for Soils (Baker Hughes International Holding Co.,)

Project for Port & Terminal Development Sector

- Padauk Shwe War (PSW) Terminal Project, (Rotary Engineering Co., Ltd. - Thailand)
- Jetty Construction (Myanma Oil & Gas Enterprise)
- IRCP Concret Jetty Project (Yangon Division), (Myanma Agribusiness Public Corporation - MAPCO)
- DENKO Thilawa Oil Storage Tank Terminal Project (TTCL Vietnam Corporation)
- Grain Terminal (IBTT) Project, (Penta Ocean Construction Co., Ltd. - Japan)

Project for Pharmaceutical & Hospital Sector

- New Yangon Specialist Hospital Project, (Taisei Corporation - Japan)
- Automated Warehouse for Pharmaceutical Products (Ministry of Industry)
- Snake Anti-venom Production Center (Ministry of Industry)
- Snake Farm (Ministry of Industry)
- Pharmaceutical Factory (Pyin Oo Lwin) (Ministry of Industry)
- Pharmaceutical Factory (Inyaung) (Ministry of Industry)
- Pharmaceutical Factory (Yekhar) (Ministry of Industry)
- Large Volume Parenteral Solution Production Plant (Mandalay Division), (Ministry of Industry)

Project for Educational Sector

- Technological Research Center (TRC), Ministry of Science & Technology)
- Computer University (Magway), (Ministry of Science & Technology)
- Computer University (Loikaw), (Ministry of Sciences & Technology)
- Computer University (Meikhtila) (Ministry of Sciences & Technology)
- Computer University (Tha Htone) (Ministry of Sciences & Technology)
- Yadanarpon Cyber City (Pyin Oo Lwin) (Ministry of Sciences & Technology)
- Technological University (Dawei) (Ministry of Science & Technology)
- Technological University (Meikhtilar) (Ministry of Sciences & Technology)
- Technological University (Loikaw) (Ministry of Science & Technology)
- Technological University (Pathein) (Ministry of Sciences & Technology)
- Technological University (Sagaing) (Ministry of Sciences & Technology)
- University of Dental Medicine (Yangon), (Ministry of Health)
- Basic Education High School (Mayangone), (Tzu-Chi Foundation, Taiwan)
- Basic Education Middle School (Thin Gan Gyun), (Tzu-Chi Foundation, Taiwan)
- Myanmar Aerospace Engineering University (Meikhtila), (Ministry of Education)
- Computer University (Taungoo), (Ministry of Education)
- Government Technical Institute (GTI - Magway), (Ministry of Education)
- 3 Storeyed Lecture Building Project (Magway TTC) , (Ministry of Education)
- Government Technical Institute (GTI - Bago Region), (Ministry of Education)
- Convocation Hall Project (University of Community Health, Magway), (Ministry of Health & Sports)

Project for Industrial Sector

- Glass Factory (Kyaukse), (Ministry of Industry)
- Cement Factory (Taung Phillar), (Ministry of Industry)
- Rice Mill (Nyaung Tone), (Ministry of Livestock & Fisheries)
- 10-13 Tons/Hr Aquatic Production Feed Plant Project (Nyaung Tone), (Ministry of Livestock & Fisheries)
- 80 Ton/Day Pulp Factory (Ye Ni), (Ministry of Industry)
- 30 Ton/ Day Hydrogen Peroxide Plant (Chauk), (Ministry of Industry)
- 60 Ton/Day CTMP Newsprint Paper Mill (Tharpaung), (Tianjin Machinery Imp. & Exp. Corporation, Taiwan)
- 200 Ton/Day Pulp Factory (Tharpaung), (Ministry of Industry)
- Sinmalite Hyper Market (Yangon City Development Committee)
- J&M Steel Fabrication Factory (JFE, Japan)
- Steel Fabrication Factory (KTECG)
- Brick Factory (MinGone), (Ministry of Industry)
- Brick Factory (Pan Tin)
- Steel & Enamel Factory (Minsu), (Ministry of Industry)
- Poultry, Livestock and Fish Feed Production Line (Hlawgar), (Ministry of Livestock and Fisheries)
- Spinning Factory Project (Pyawbwe), (Ministry of Industry)
- Spinning Factory Project (Myitthar), (Ministry of Industry)
- Steel Mill Project (Pimpet), (Ministry of Industry)
- Aungmyingalar bus Terminal, Phase - I , (Yangon City Development Committee)





SELECTED PROJECT LIST

Project for Industrial Sector

- Truck Terminal & Whole Sales Zone, (Mandalay City Development Committee)
- I&H Precast Concrete Factory Project (Hmawbi), (I&H Engineering Co., Ltd.)
- Shop House & Other Infra Structure Project (Thilawa SEZ), (Thilawa Property Development Co., Ltd.)
- Showroom & Warehouse Project (Mingalardon)
- Bounded Warehouse Project (DIL, Dagon Seikkan)
- Dry Port Project (Ywar Thar Gyi)

Project for Estate Sector

- Housing Project, Yandarnabon, (Mandalay City Development Committee)
- 4 Storey, 8 Unit Housing Project (Mandalay City Development Committee)
- Low Cost Housing Project, (Mandalay City Development Committee)
- Guest House (Nay Pyi Taw), (Mandalay City Development Committee)
- Multi-Purposed Stadium Project (Mandalay), (Ministry of Health & Sport)
- 3 Storeyed Hostel Project (Sagaing), (Ministry of Border Affair)
- 4 Unit 4 Storeyed Student Hostel Project (Magway), (Ministry of Education)
- 8 Unit 5 Storeyed Staff Housing Project (Pwint Phyu), (Ministry of Construciton)
- 8 Unit 5 Storeyed Staff Housing Project (Tha Yet), (Ministry of Construciton)

Project for Electrical and Power Plant Sector

- 66 kV Power Transmission Line (Magway Division), (Ministry of Electric Power)
- 66 kV Power Transmission Line & Sub-station, (Myingyan), (Ministry of Industry)
- 66 kv Power Transmission Line (Loiksaw), (Ministry of Electric Power)
- 66 kV Power Transmission Line & Sub-station, (Rakhine Division), (Ministry of Electric Power)
- 33/11, 5 MVA Sub-station & External Line for Myanmar Institute of Information Technology, Ministry of Sciences & Technology
- 66/11, 10 MVA Sub-Station & Power Distribution Line for BPI, (Ministry of Industry)
- 225 MW Combine Cycle Power Plant Project (Myingyan), Semb Corb Power Co., Ltd.
- Cable Termination Work at Thilawa Oil Depot Project, PEC PTE. Ltd.
- 33 kV Power Transmission Line (Thonegwa), (YESC)

Project for Road & Bridge Sector

- Railway Project (Kathar-SinKhan - Bamaw), (Ministry of Rail Transportation)
- Ba Yint Naung 56 - Yadanar Road, (Mandalay City Development Committee)
- MayZin Thein Road, (Mandalay City Development Committee)
- Ngu Shwe War & Thazin Road, (Mandalay City Development Committee)
- Bridge No. 72 (A) Railway Bridge Project (Mawlamyine), (Myanma Railways)
- Bridge No. 305 Railway Bridge Project (Swar), (Myanma Railways)
- La Maing Railway Bridge Project (Mawlamyine), (Myanma Railways)
- Bago River Bridge Construction Project (JICA), (Yokogawa Bridge Corporation - Japan)
- Atran Bridge & ZarThaPyin Bridge Project (JICA), (IHI Infrastructure System Co., Ltd. - Japan)
- Hta Man Thi Bridge Project, (Myanma Economic Corporation - MEC)
- Pulone Tone Tone Bridge Project (Myanma Economic Corporation - MEC)
- Ka Myaw King Bridge Project (Myanma Economic Corporation - MEC)

Project for Government, Public & Commercial Sector

- Magway Parliament Building Project (Magway), (Magway Hluttaw)
- 8 Unit 3 Storeyed Apartment Building (Magway), (Magway Hluttaw)
- Shwe Set Taw Lift Tower & Sky Walkway Bridge Project (Magway), (Shwe Set Taw Trustee)
- Magway Regional Government's Guest House Project (Nay Pyi Taw), (Magway Regional Government)
- 3 Storeyed Student Hostel Project (Magway TTC), (Ministry of Educations)
- Bago Station Upgrading & Renovation Project (Bago), (Myanma Railway)
- 4 Unit 4 Storeyed Teacher's Housing Project (Computer University - Meikhtila), (Ministry of Educations)

On-Going Projects

- Steel Structure Warehouse Project (Mingalardone), (Mahar Modern Myanmar Co., Ltd.)
- Thanlyin Refinery Project (Yangon), (Thanlyin Refinery Company Limited)
- Steel Fabrication Work for Zarthapyin Bridge & Atran Bridge, (IHI Infrastructure System Co., Ltd.)
- Steel Arch Truss Fabrication for Htamathi Bridge Project, (Myanmar Economic Corporation MEC)
- 3 Storeyed Main Building Project (Pyay GTI), (Ministry of Science & Technology)
- New Yangon Specialist Hospital Project (Phase - II) (Yangon), (Taisei Corporation, Japan)
- 8 Storeyed Mixed-use Building Project (Sanchaung, Yangon), (Private)
- 3 and Hlaf Storeyed Residancial Building Project, (Private)
- Yankin International Hospital Project, Mandalay (Private)

Delivery of More Than 150 Successful Projects

" Excellence is Our Normal "





Head Office

No. 216/222, Bo Myat Htun Housing, Corner of 49 Street & Mahar Bandoola Road, Pazundaung Township, Yangon.
Tel : +95 9 977 225 001 ~ 5, +95 9 977 225 046
Email : ktecg@kyawtharengg.com.mm, uma.ktcg@gmail.com
Website : www.kyawtharengg.com.mm

Mandalay Branch Office

No.(A7), Corner of 53 & 28 Street , Chan Aye Thar Zan, Mandalay
Tel : +95 9 977 225 046, +95 9 977 225 004, +95 9 5000144
Website : www.kyawtharengg.com.mm

- Sale Center 1 - Building (60), Room (2, 3), Kyauk Sein 3rd Street,
(+95) 1 642704, 1 646724, 9 73066805
- Sale Center 2 - No. (344), Karya (12) Street, Thingangyun Gyi,
Mingalar done Township, Yangon.
Tel: (+95) 9 977 225 065, 9 977 225 074
- Sale Center 3 - Sin Gaung Road, North of District Stadium, Minbu,
Tel : (+95) 9 977 225 043
- Sale Center 4 - No. (2/160), No. 3 Main Road, Pearl Myo Thit,
Yangon. Tel : (+95) 9 459192500, 9 459192900